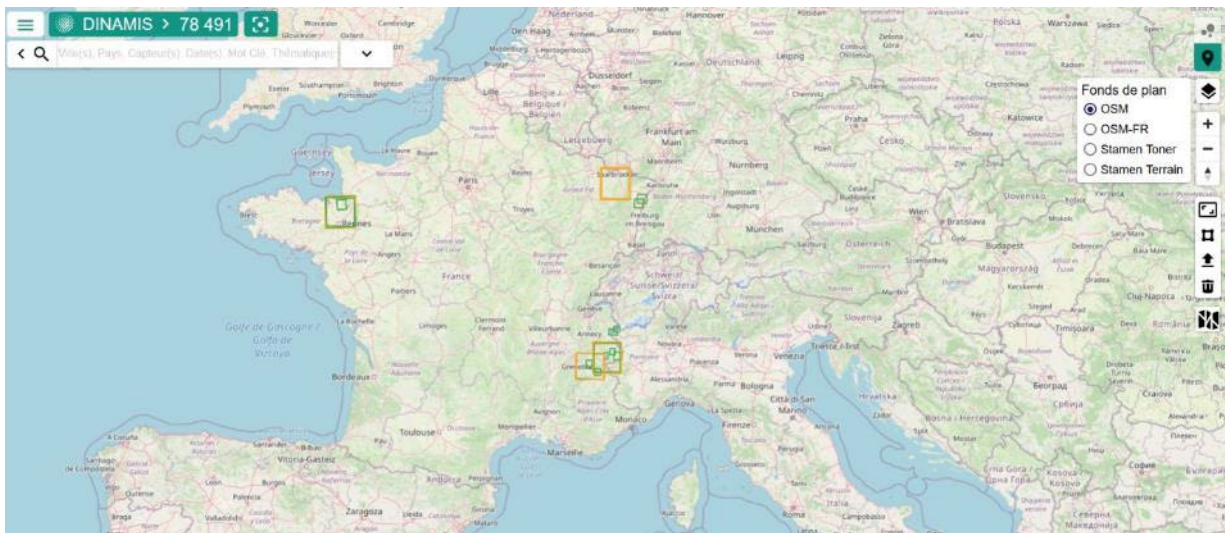


VIEWING DATA

This tutorial shows you how to use simple or advanced data visualization techniques in the DINAMIS Catalogue.

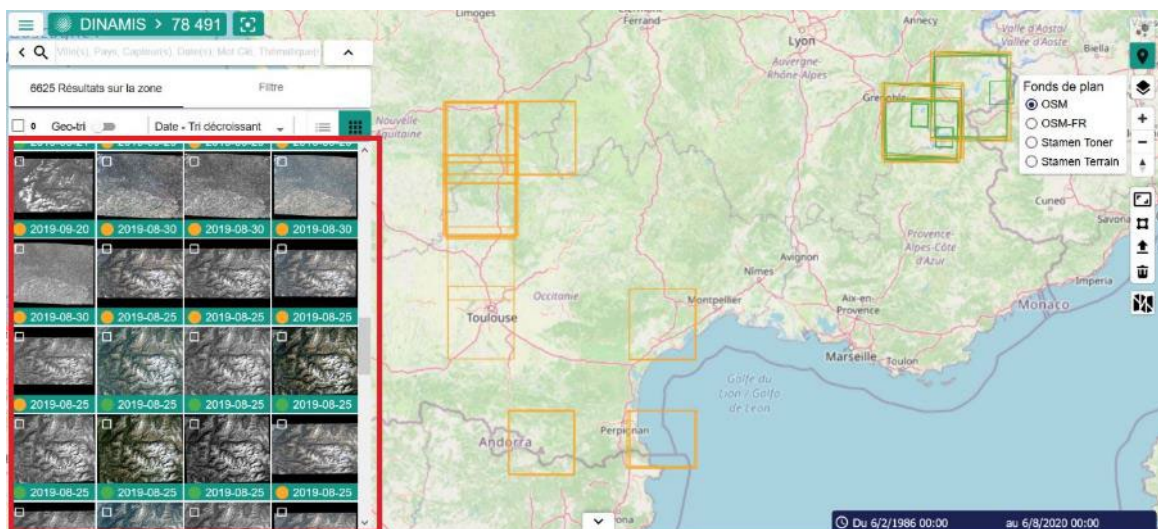
You can view data in the Catalogue in several ways.

1. Viewing by bounding box



Schematic data visualization using a bounding box.

2. Viewing by image



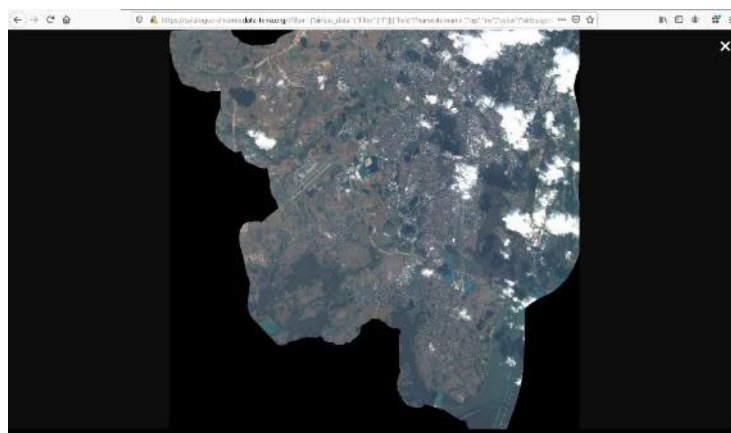
Quicklook visualization with grid tool selected.

Quicklooks provide two levels of detail:

Figure 1: Quicklook in small format

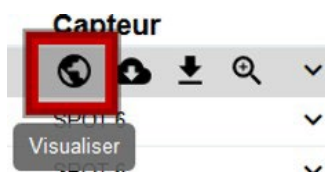


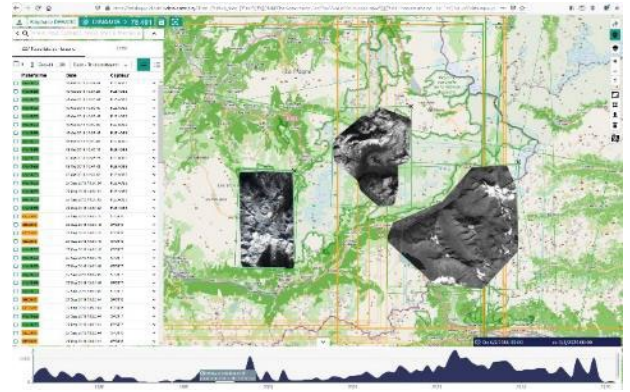
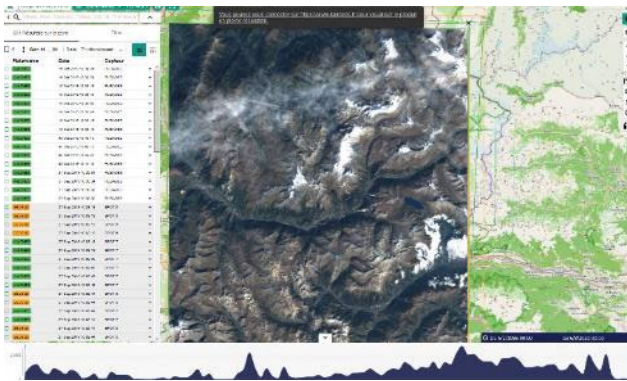
Figure 2: Quicklook in large format



3. Viewing by standardized geographic services

You can view single or multiple products using standardized WMS and WMTS services.






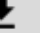




IMPORTANT

Two things should be borne in mind when viewing data in the DINAMIS Catalogue's interfaces:

1. All data can be viewed directly on the basemap selected and in the bounding box, except for data from platforms that do not support WMTS or data not covered by this service on the remote platform. In such cases, you must ask the remote platform's administrators to include the data in WMTS to be able to view them on the DINAMIS catalogue's basemap.
2. All GEOSUD data can be viewed in a dedicated OpenLayers interface that opens in the DINAMIS Catalogue interface.

Illustration:

Plateforme	Date	Captur
<input type="checkbox"/> GEOSUD	01 Jun 2020 06:07:15	   
<input type="checkbox"/> GEOSUD	01 Jun 2020 06:07:15	SPOT 6 
<input type="checkbox"/> GEOSUD	01 Jun 2020 06:07:14	SPOT 6 

Visualiser



Geo-tri | Date - Tri décroissant

Plateforme	Date	Capteur
GEOSUD	01 Jun 2020 06:07:15	SPOT 6

Toponymes
Pays : France
Département : La Réunion
Région : Réunion
Ville : Saint-Pierre-Saint-Joseph

Identification
Identifiant : MD_SPOT6_2020_HC-Brute_NC_DRS-MS_SPOT6_2020_HC_BAUT_NC_GEOSUD_MS_21
Identifiant Parent : SPOT6_2020_HC-Brute_NC_DRS-MS
Plateforme : GEOSUD

Informations techniques
Résolution : 6.25
Angle d'incidence : 8.79375268681
Couverture nuageuse : 10.68

Produit et niveau de process
Niveau de produit : SENSOR
Discipline : Ortnomagey

Mode d'acquisition
Capteur : SPOT 6
Instrument : NAOMI

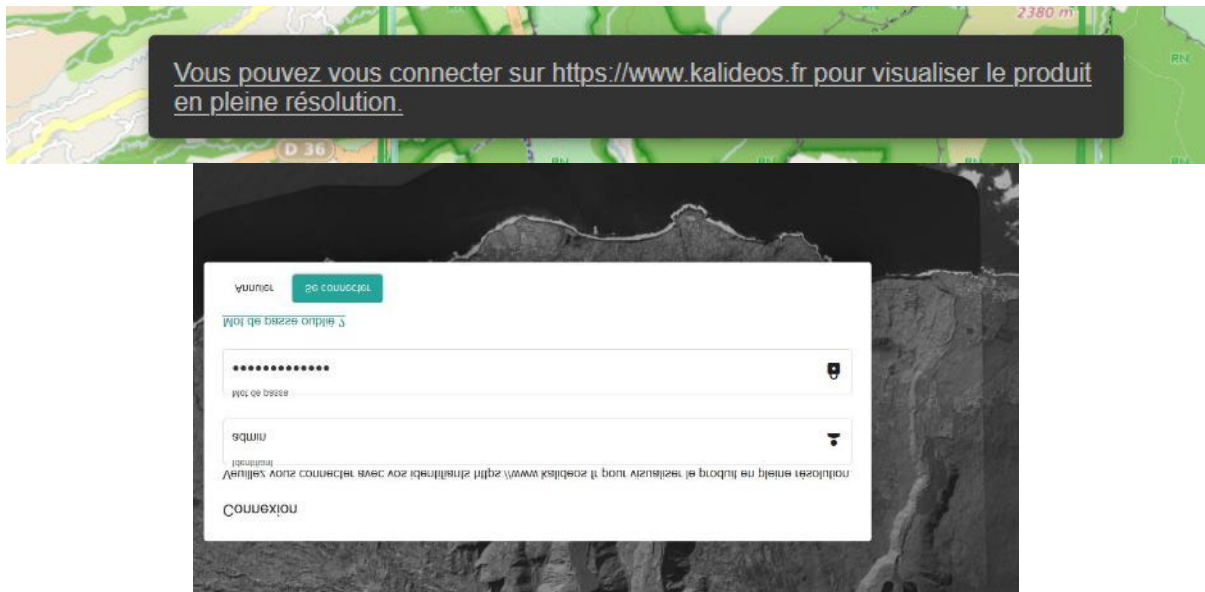
Liens des services
Liens WMS : <http://ids.ecupex-geosud.fr/constellation/WS/wms/WMS>

Zoomer sur | Télécharger la métadonnée | Télécharger le produit

Visualiser
Visualiser
Visualiser

01 Jun 2020 06:07:15 | SPOT 6

Full-resolution viewing is only available via the remote data interface with the necessary viewing rights (e.g. Kalideos, GeoSud, Pleiades CNES or Pleiades IGN). You can connect directly to the remote data supplier from the DINAMIS Catalogue.



You can delete a view by clicking the cross in the box displaying the image.

Viewing basemaps

The default basemap for viewing is OSM-FR, but you can also select OSM or Stamen. Certain basemaps can be imported using the import tool in WMTS.



Figure 3: WMTS import tool

